

This is Home.



We Treat it Right.
Upper Thompson Sanitation District

The Future of Water Reclamation in Estes Park

Upper Thompson Sanitation District



Get to Know Upper Thompson Sanitation District

Upper Thompson Sanitation District was formed in 1971 to:

Provide high-quality,
cost-effective
wastewater
treatment services
to the areas
surrounding
Estes Park

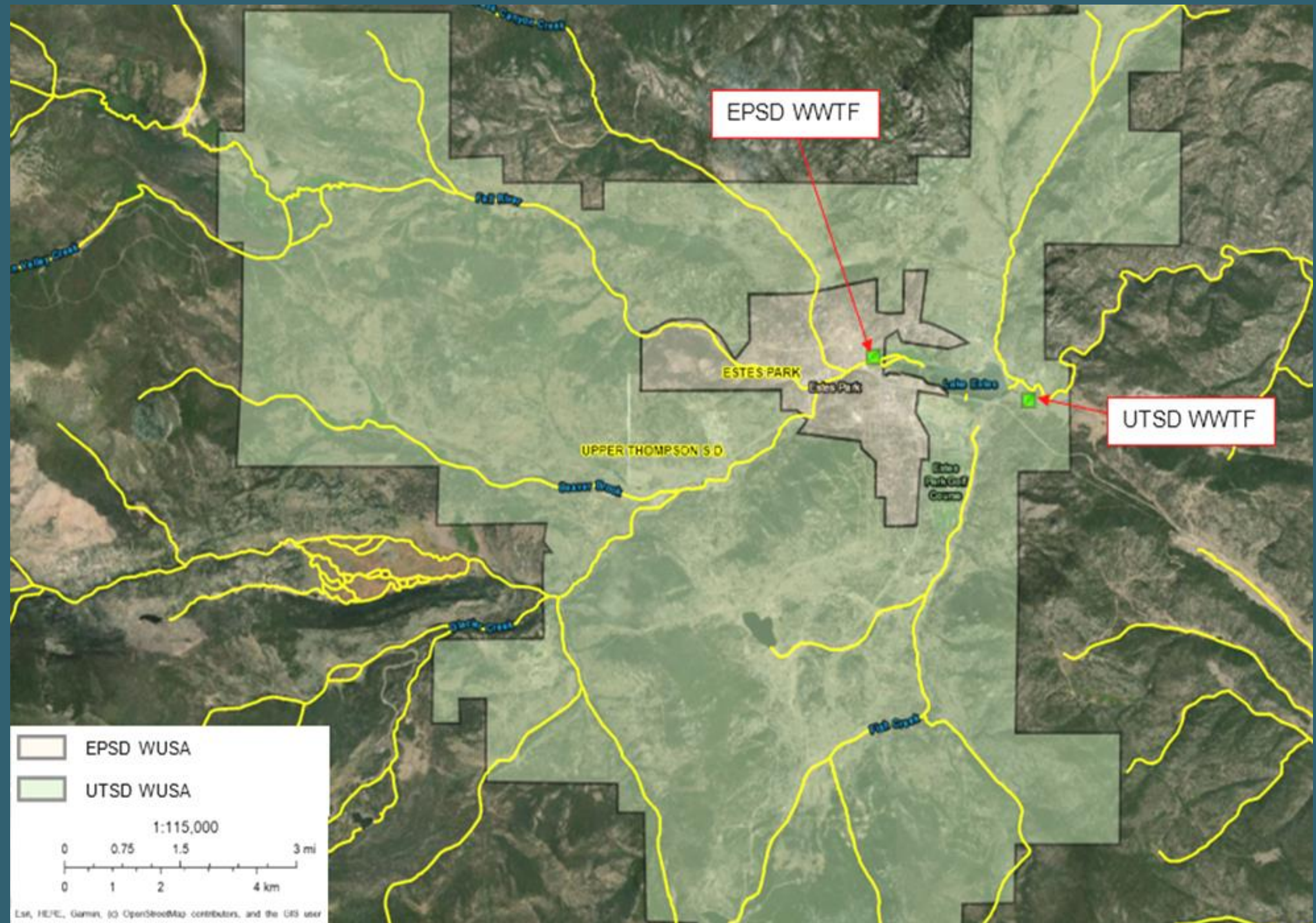
Protect the
quality of the
Big Thompson River

Allow a high quality
of life for residents
throughout the
Estes Valley

Estes Park is served by two sanitation districts:

- Upper Thompson Sanitation District (UTSD)
- Estes Park Sanitation District

UTSD serves 4,000 customers across 44 square miles



UTSD: What We Do



Collect

- UTSD collects the water that goes down the drains of homes and businesses in the Estes Valley



Treat

- We remove harmful nutrients (nitrogen and phosphorous) and metals from water in order to protect aquatic life, agriculture, the environment and public health



Release

- We release cleaned and cooled effluent into the Big Thompson River in order to conserve and protect our most precious resource: water

The District Today



The Challenge

UTSD's infrastructure was built in the 1970s and is approaching the end of its useful life.



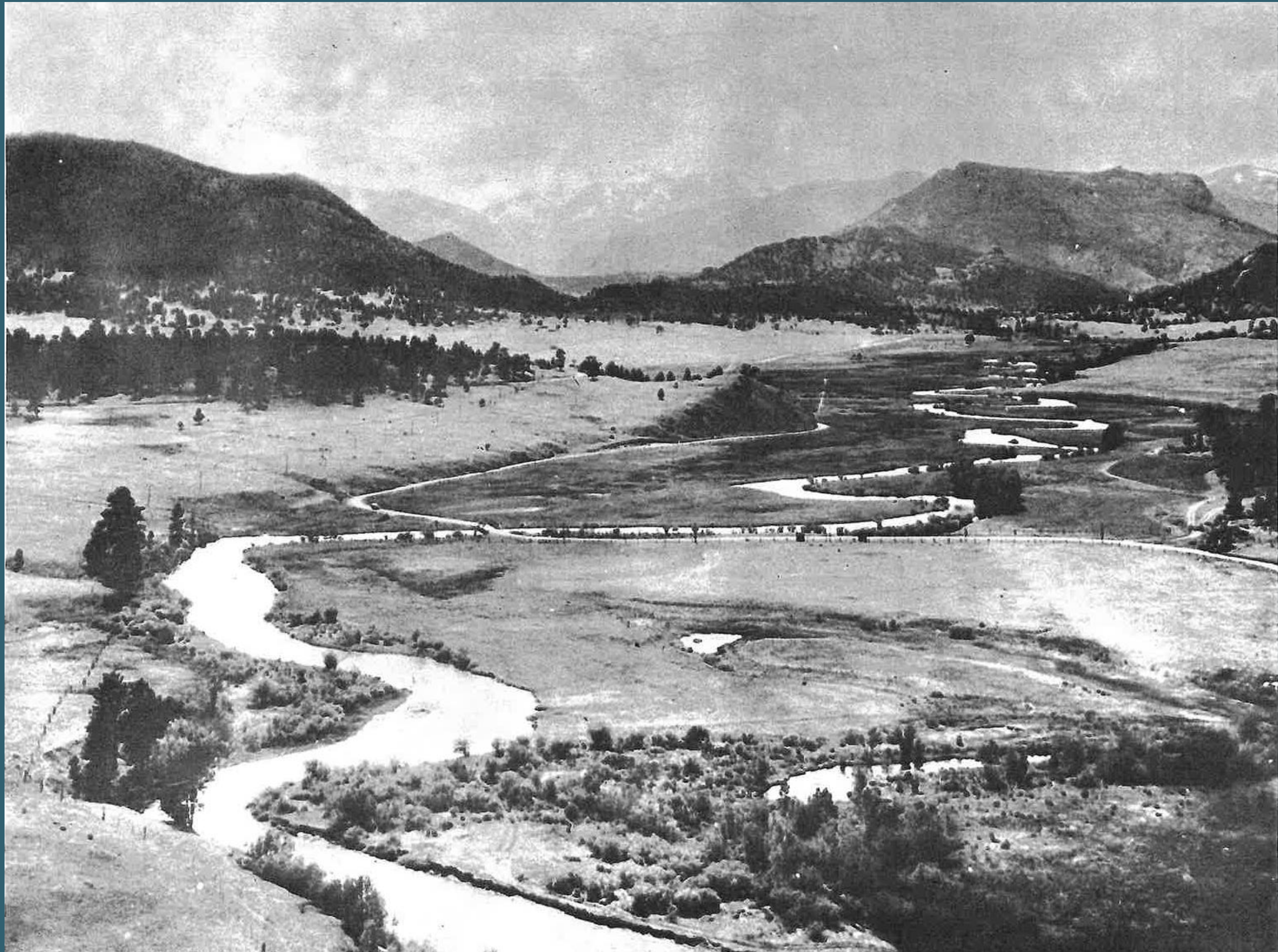
What's at Stake

Our current plant lacks capabilities to meet increasingly stringent treatment standards to protect quality of life and the environment. It is also space constrained, limiting our ability to expand on site.



The Solution

To ensure that the next 50 years are as strong as the first, we are making some important updates to ensure the Estes Valley has the critical infrastructure it needs to thrive for years to come.



Project Timeline*



**Timeline depends on meeting critical milestones and receiving approvals and permits from various entities.*

Funding

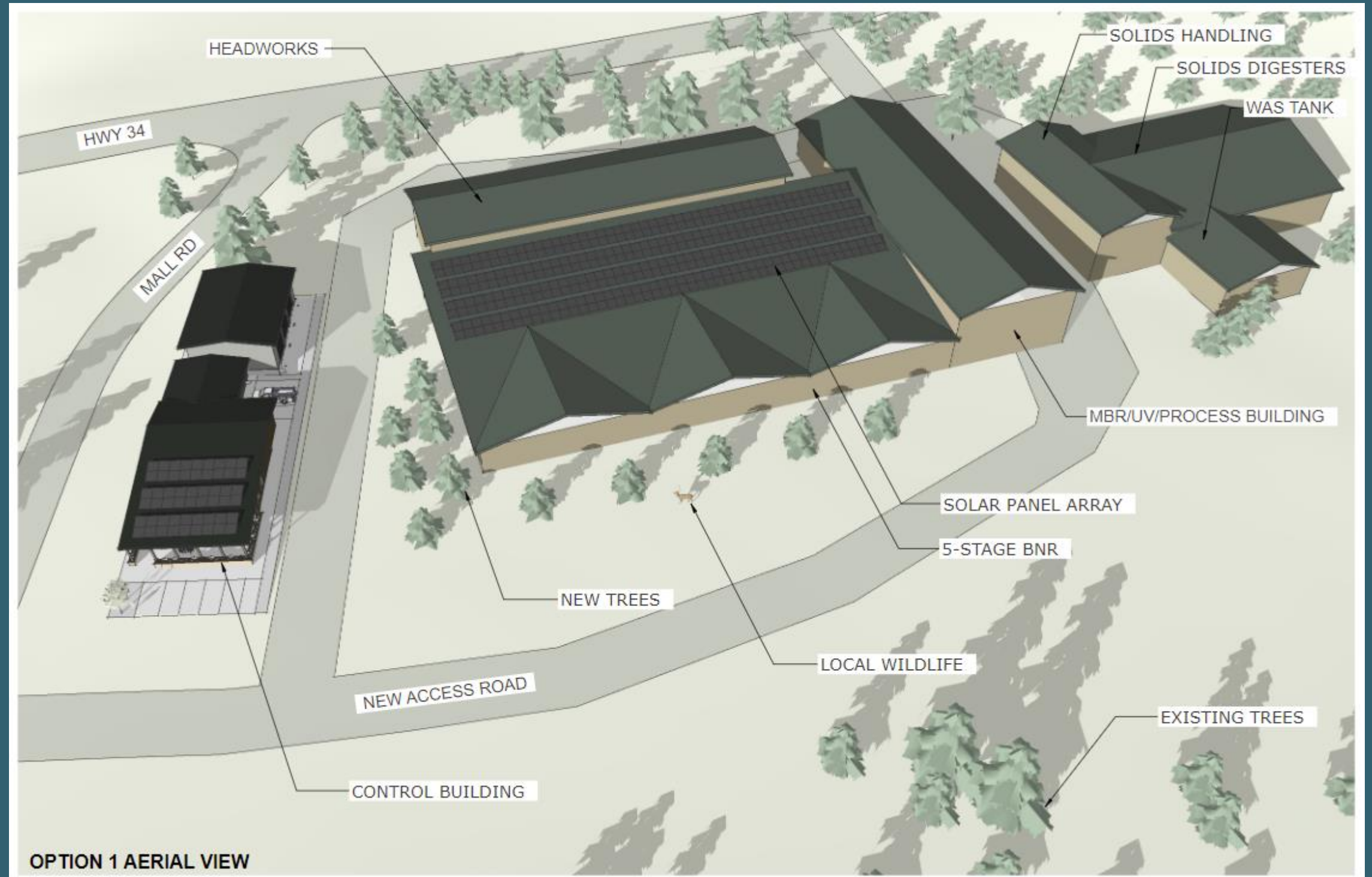
To meet this challenge in the most responsible and efficient way possible, we conducted a rate study to develop a financial plan for the District and determine how much additional funding is needed to finance the new facility and lift stations.

Year	Rate per SFE	% Increase
2020	\$583	--
2021	\$647	11%
2022	\$718	11%
2023	\$797	11%
2024	\$876	10%
2025	\$903	3%
2026	\$921	2%

The Solution

We own 9 acres of land to build a new treatment facility that will allow for the community's needs for decades to come.

The new water treatment facility will be designed with community input to ensure it complements the surrounding landscape and fits the character of the area.



Preliminary Conceptual Design



UPPER THOMPSON SANITATION DISTRICT WRF AND LIFT STATION IMPROVEMENTS ESTES PARK, COLORADO

Get Involved



Get Information



<https://utsd.colorado.gov>



Spread the Word

Tell friends & colleagues

Share our resources

Help promote meetings

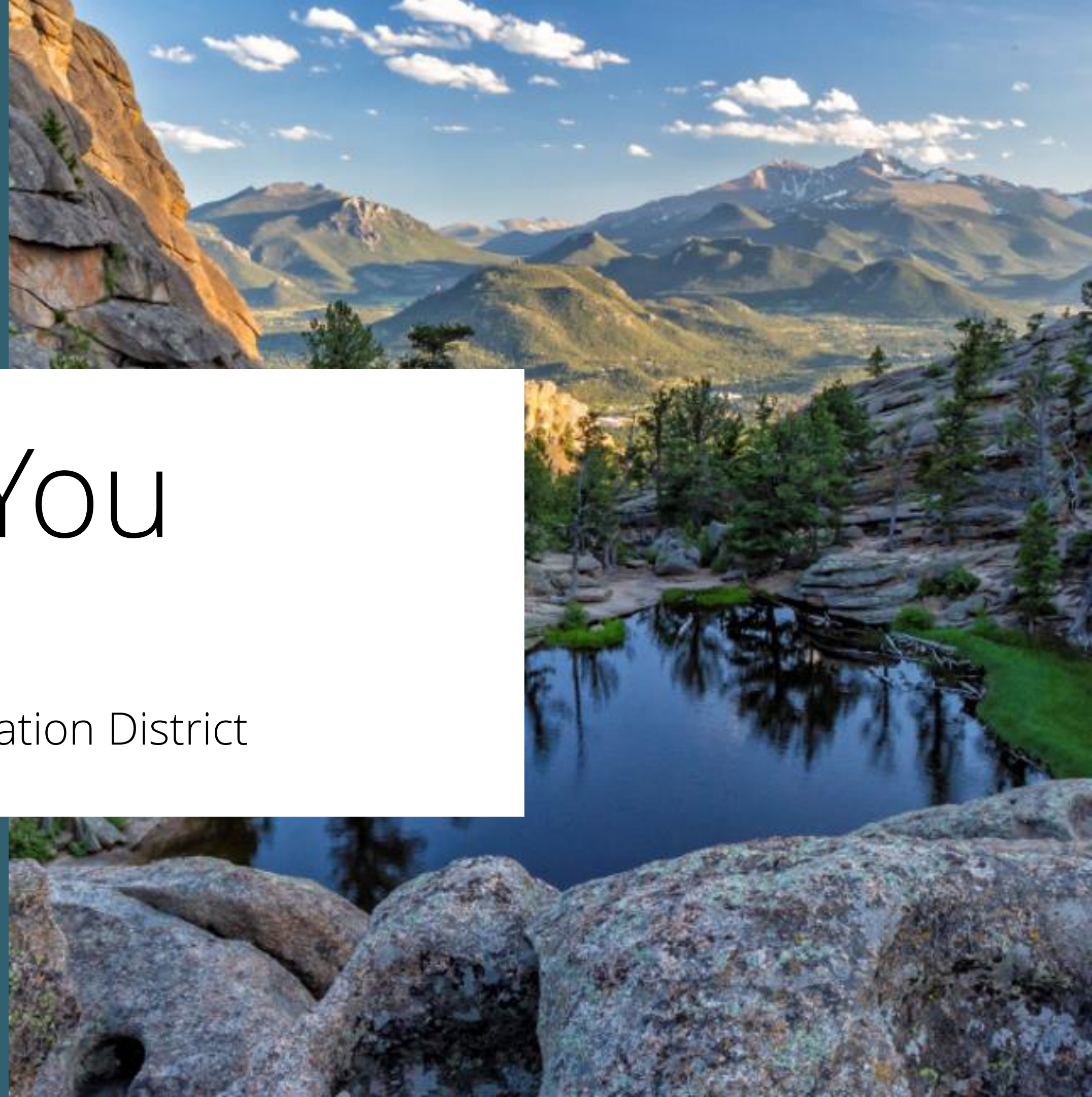


Provide Input

Inform design this Spring

Refine design this Summer/Fall

Finalize design in
Winter '22/'23



Thank You

Upper Thompson Sanitation District

Chris Bieker

chris@utsd.org

(970) 586-4544

utsd.colorado.gov/wastewater-treatment-facility